



Climate ADAPT

SHARING ADAPTATION
INFORMATION
ACROSS EUROPE

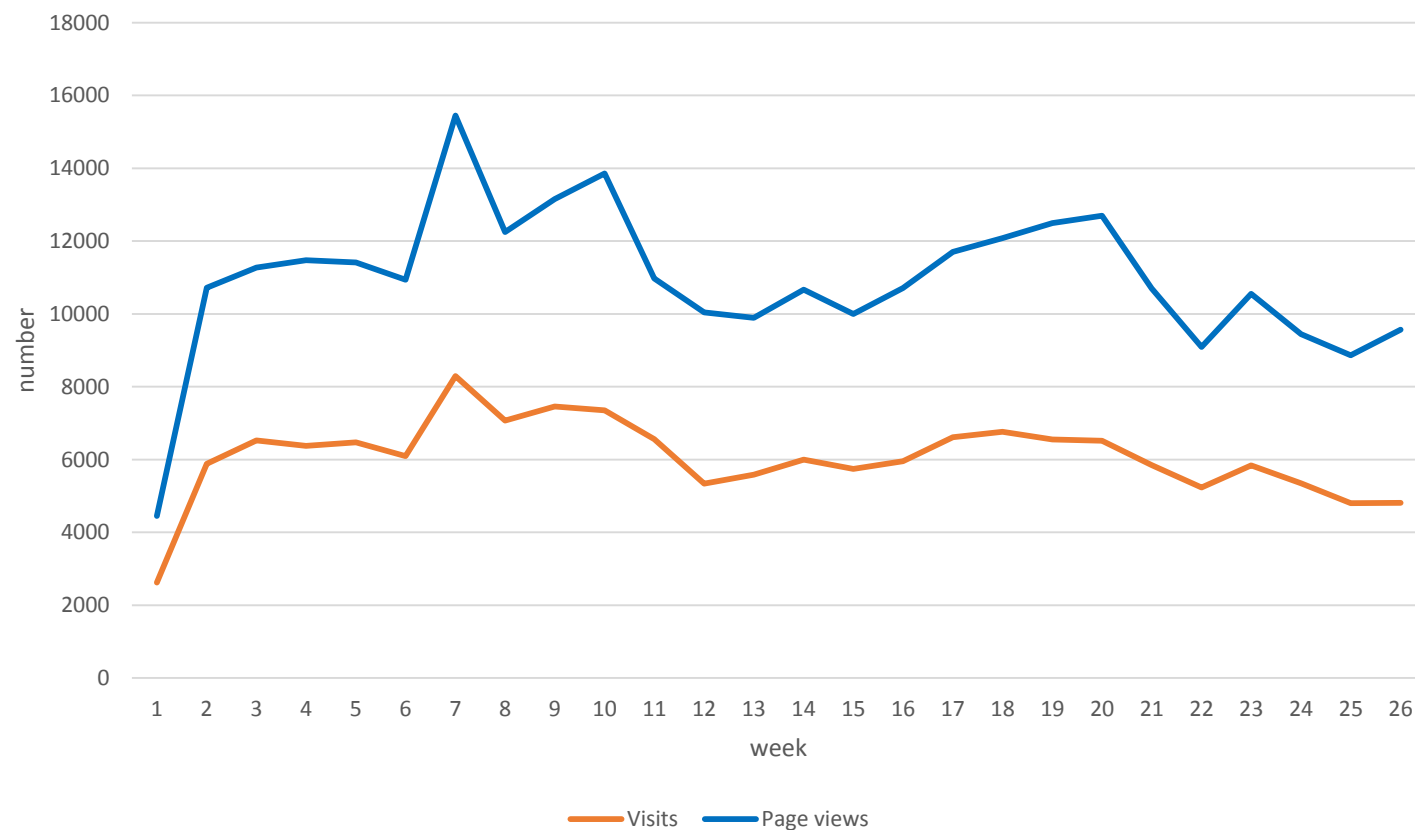
This factsheet (2020/01) summarizes statistics about platform performance with the purpose of providing our target audience with compelling information in a clear and concise format. All of the key information, facts, and figures for the Climate-ADAPT platform are displayed in a visual manner utilizing charts and images.

Hereafter the performance indicators for the first half of 2020 (between week 1 and week 26):

Visits and page views	2
Evolution of page views of key menu items (monthly basis)	3
Most visited case studies	4
New published items per EU sector policy and per type of data	5
Updated items per EU sector policy and per type of data	6
Map of case studies added to the database	7

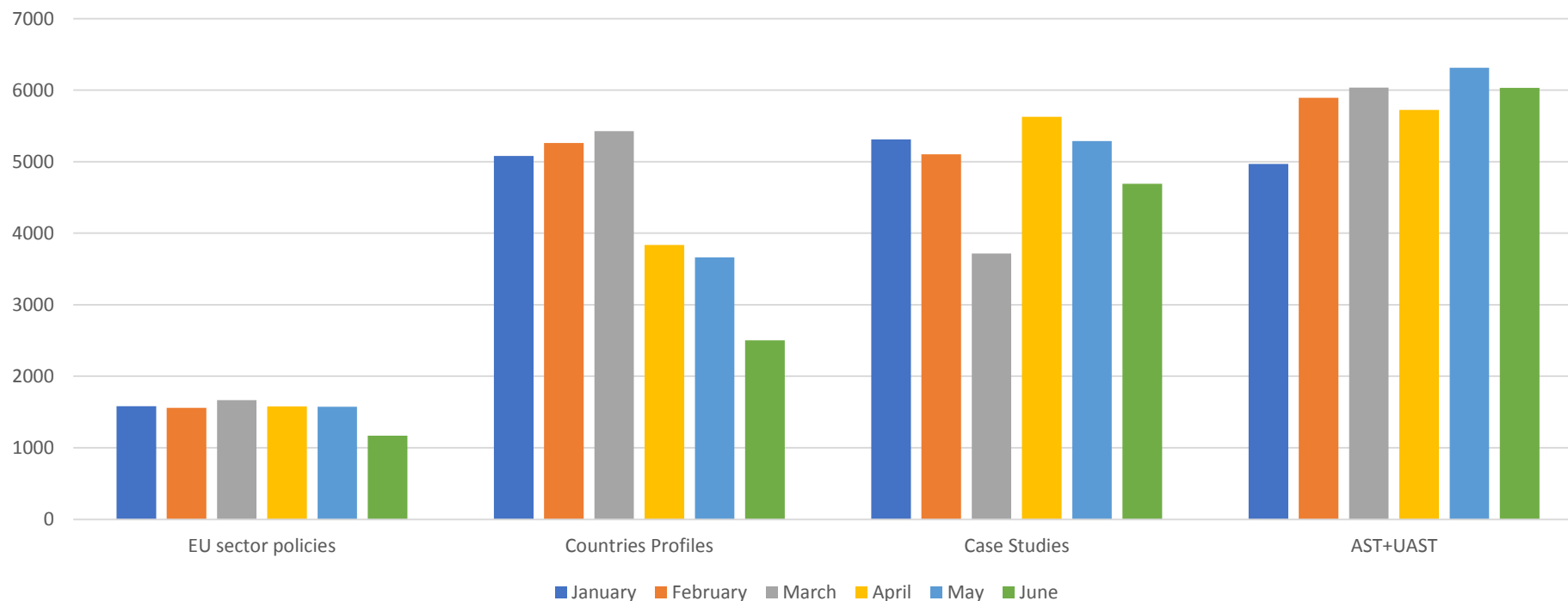
Visits and page views

Total Visits	157 638
Total Page Views	284 470



Evolution of the number of Page views and Visits (weekly basis) in the period 1 January – 30 June 2020.

Evolution of page views of key menu items (monthly basis)

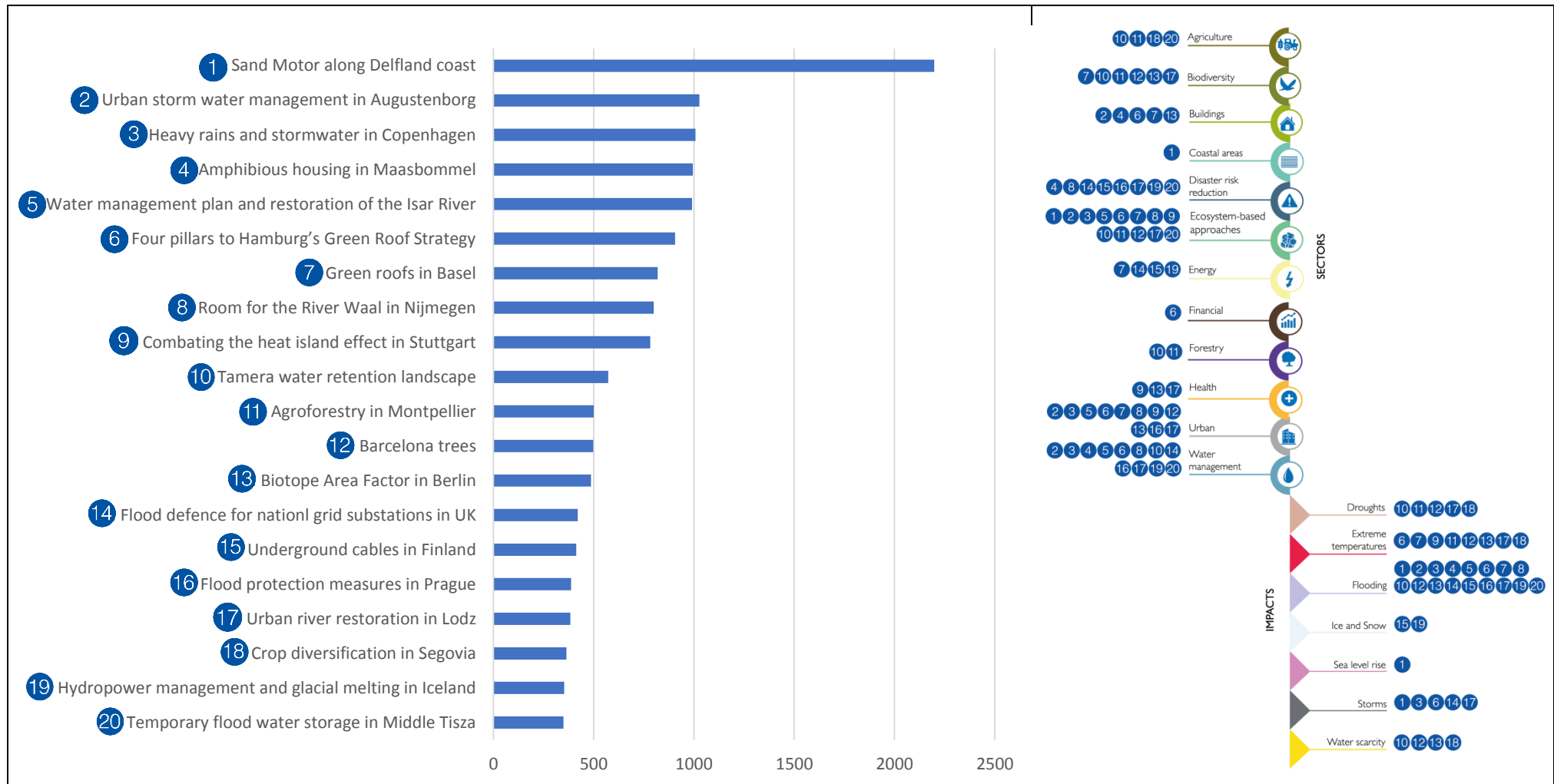


Total visits	9 130	25 769	29 739	34 968
---------------------	-------	--------	--------	--------



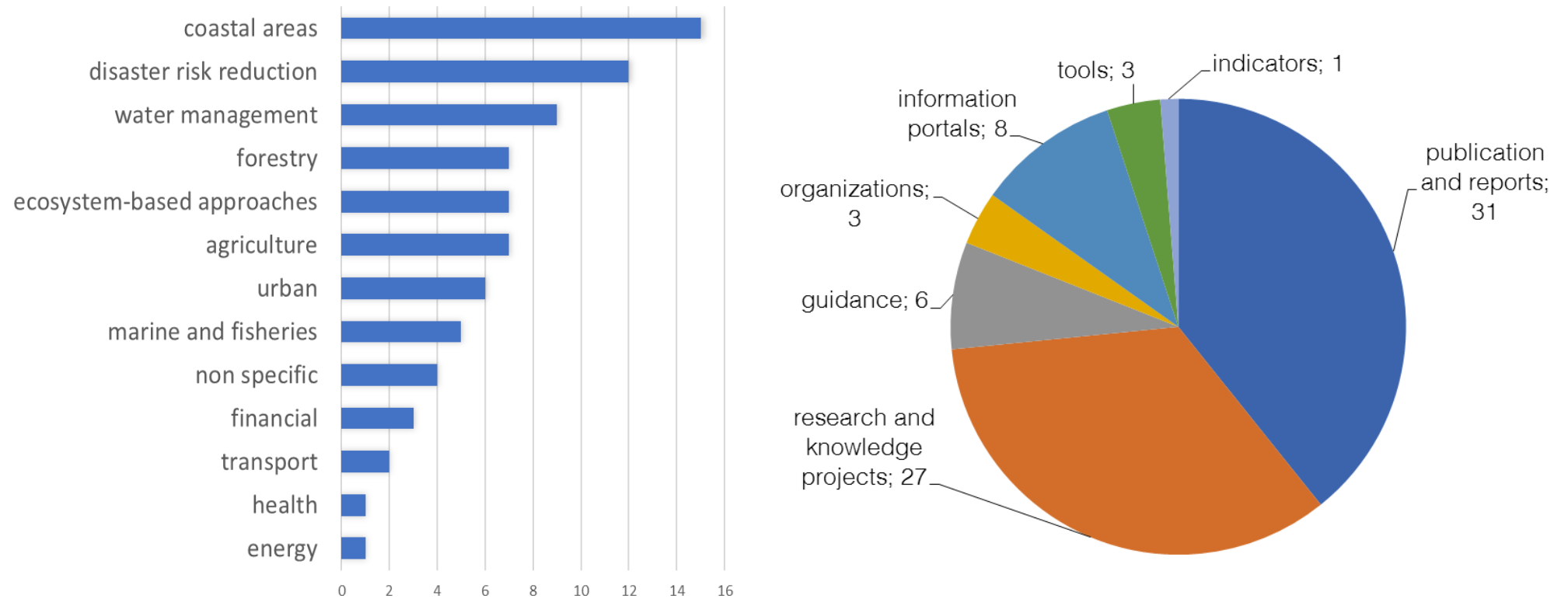
Evolution of Visits of Key Menu Items in the period 1 January – 30 June 2020.
 Key menu items are those shown in the dynamic area of the home page, i.e. the white box in the middle of the webpage.
 (AST = Adaptation Support Tool; UAST = Urban Adaptation Support Tool)

Most visited case studies



Top 20 Most Requested Case Studies (1 Jan – 30 Jun 2020). Sectors and impacts (*on the right side*) are referred to each Case study.

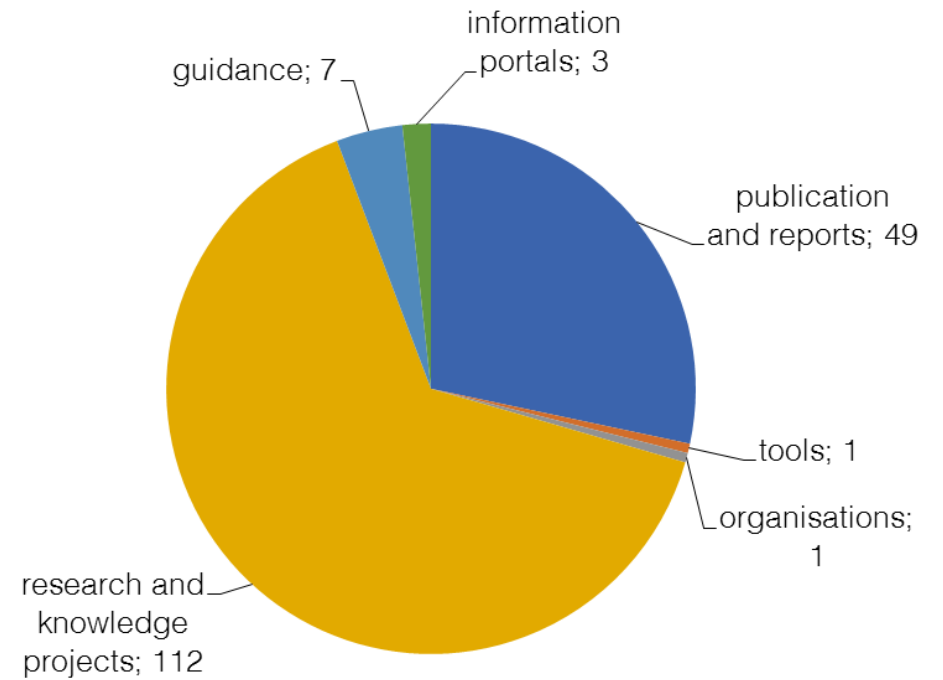
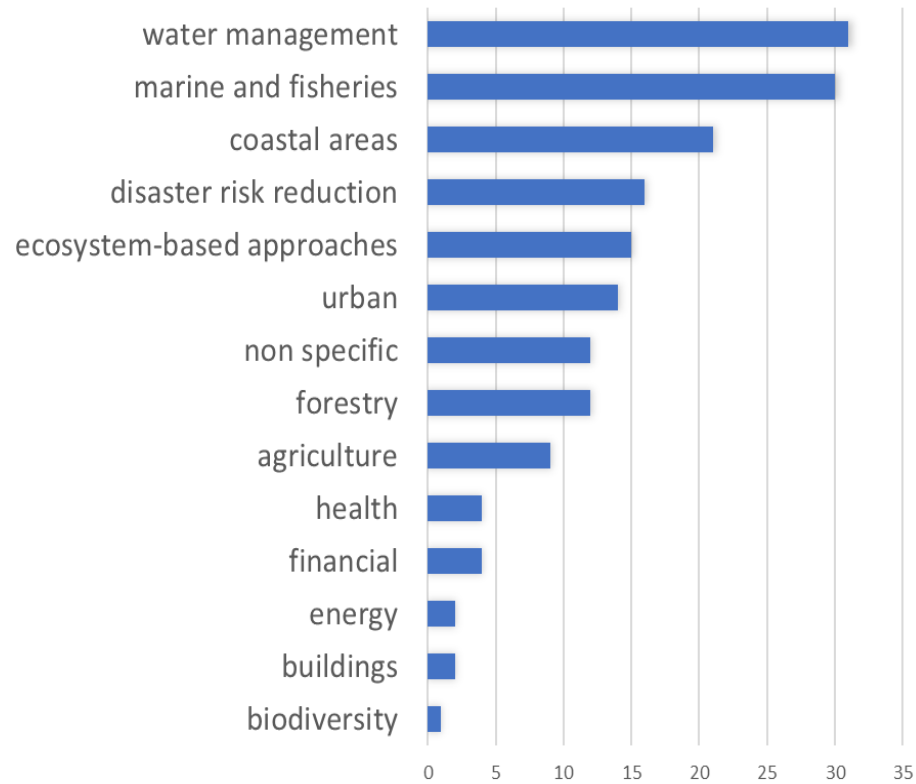
New published items per EU sector policy and per type of data



A total of 79 database items were published in the period 1 January – 30 June 2020.

Each database item can be relative to more than one adaptation sector (*left*) and to only one type of data (*right*).

Updated items per EU sector policy and per type of data



A total of 173 database items were reviewed in the period 1 January – 30 June 2020.

Each database item can be relative to more than one adaptation sector (*left*) and to only one type of data (*right*).

Map of case studies added to the database



1. [Insurance company supporting adaptation action in small and medium size enterprises in Turin](#)
2. [Use of insurance loss data by local authorities in Norway](#)
3. [Adapting to heat stress in Antwerp based on detailed thermal mapping](#)
4. [Mainstreaming climate change adaptation into urban planning: greyfield land redevelopment in Jena](#)
5. [Natural Water Retention Measures in the Altovicentino area](#)

Case studies finalised and published in the database in the period 1 January – 30 June 2020