



# Climate ADAPT

SHARING ADAPTATION  
INFORMATION  
ACROSS EUROPE

## Climate-ADAPT web statistics and database updating: performance reporting 02/2021

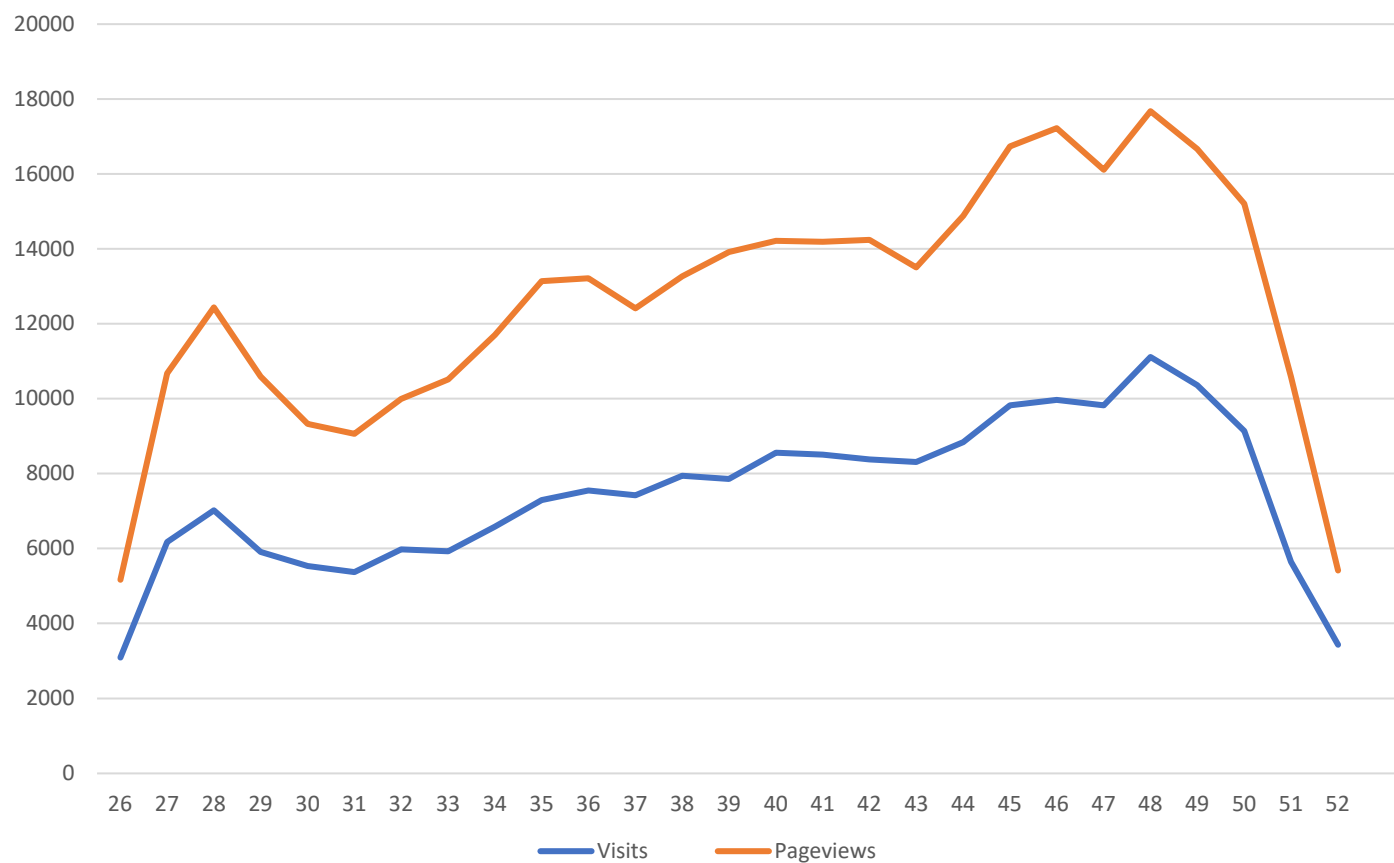
This factsheet summarizes information about the quality of the shared knowledge base on adaptation in Europe and the uptake of this knowledge by its users. It includes statistics on the platform performance with the purpose of providing information about the Climate-ADAPT database updating and platform outreach.

*Hereafter the performance indicators for the second half of 2021 (between week 28 and week 52):*

<b>Visits and Page Views</b> .....	2
<b>Evolution of Page Views of the Climate-ADAPT core content (monthly basis)</b> .....	3
<b>Most visited Case Studies</b> .....	4
<b>New published Database items per EU Sector Policy and per Type of Data</b> .....	5
<b>Distribution of database content per Type of Data</b> .....	6
<b>Distribution of Database content per Adaptation Sector and per Climate Impact</b> .....	7

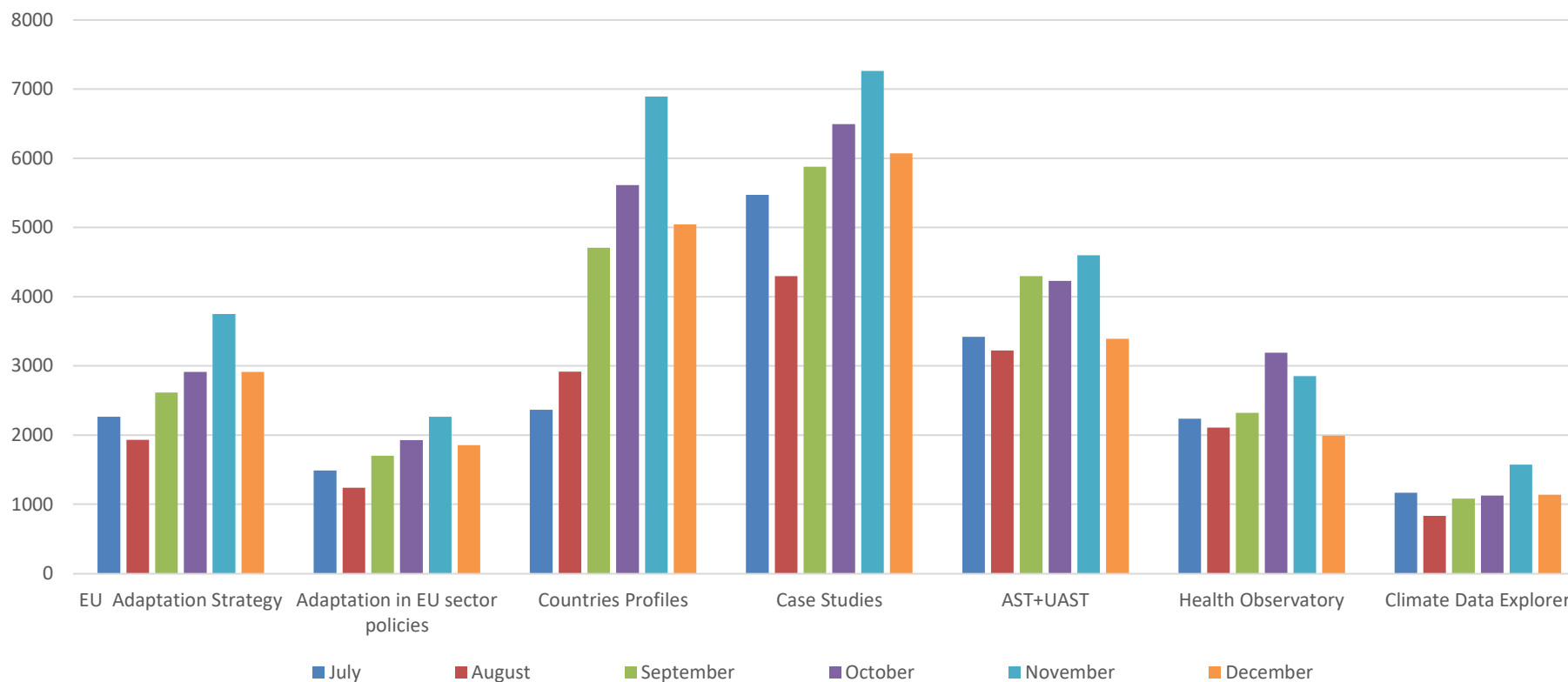
## Visits and Page Views

Total Visits	201 547
Total Page Views	342 025



Evolution of the number of Visits and Page Views (weekly basis) in the period 1 July – 31 December 2021.

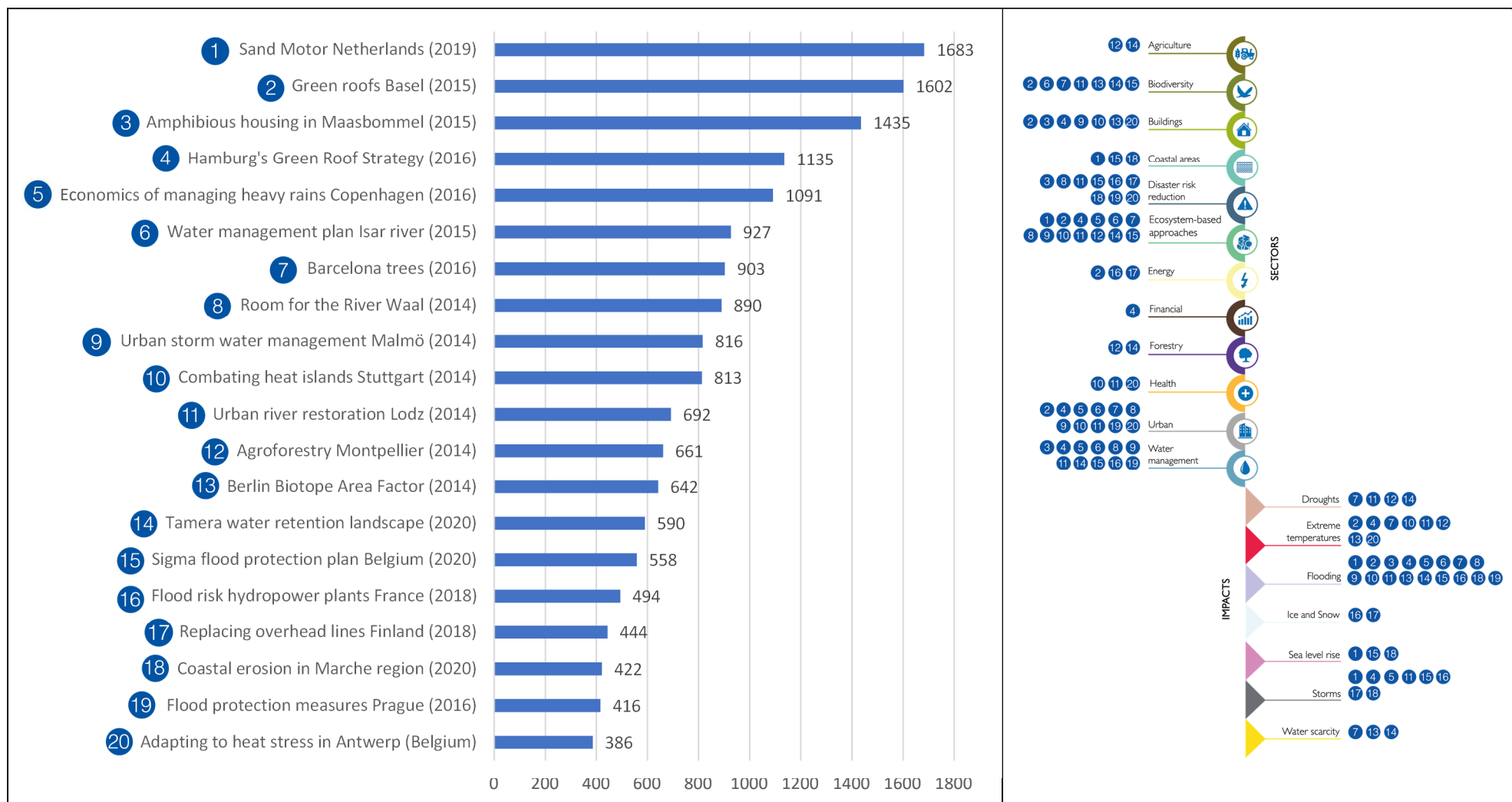
## Evolution of Page Views of the Climate-ADAPT core content (monthly basis)



<b>Total visits</b>	16 391	10 481	27 537	35 474	23 161	14 696	6917
---------------------	--------	--------	--------	--------	--------	--------	------

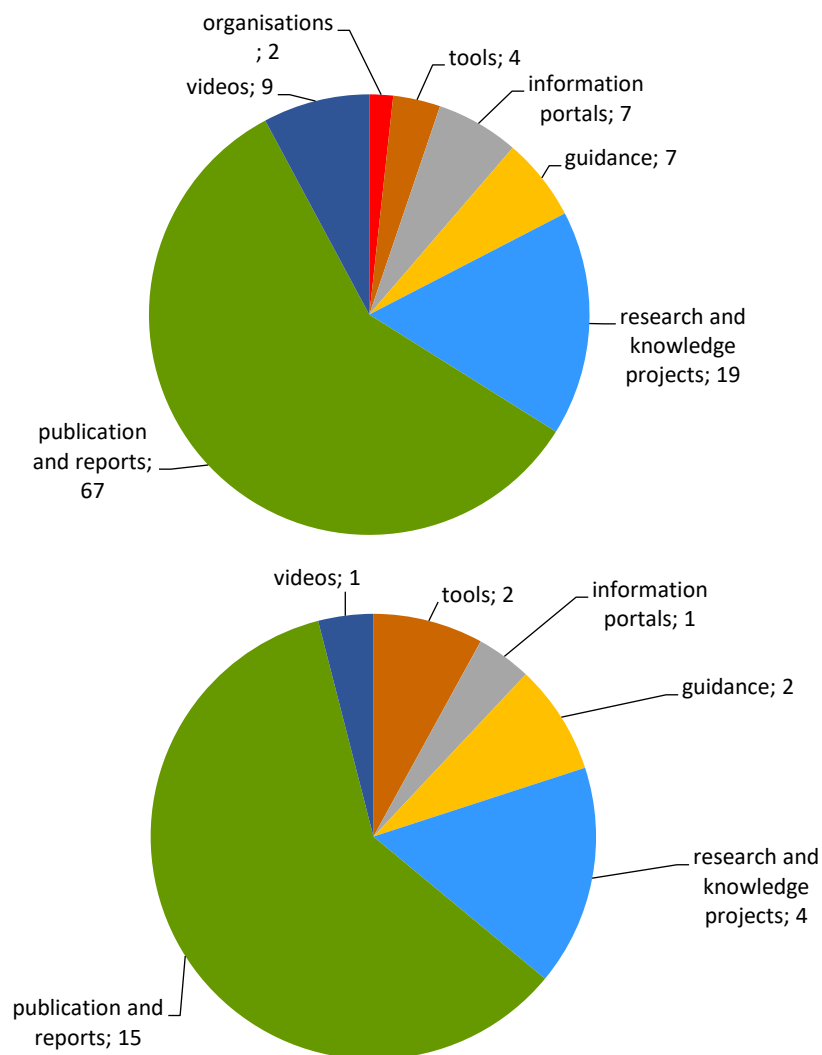
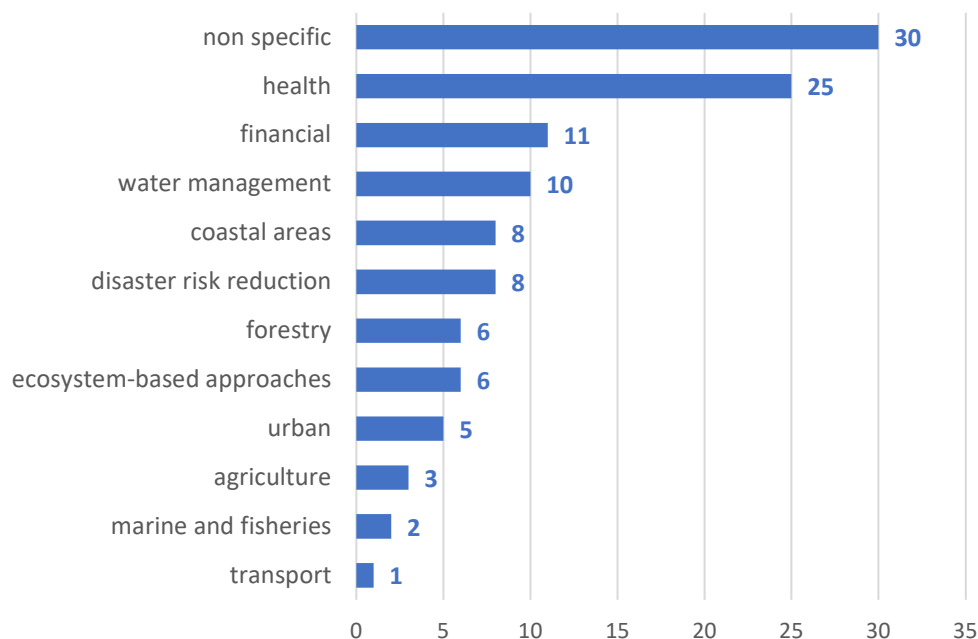
Evolution of Page views of Climate-ADAPT core content in the period 1 July – 31 December 2021.  
Core content are those features displayed in the dynamic area of the home page, i.e., the white box in the middle of the webpage.  
(AST = Adaptation Support Tool; UAST = Urban Adaptation Support Tool)

## Most visited Case Studies



Left: Top 20 most requested Case Studies (1 July – 31 December 2021). Right: Sectors and Impacts are referred to each Case Study.

## New published Database items per EU Sector Policy and per Type of Data

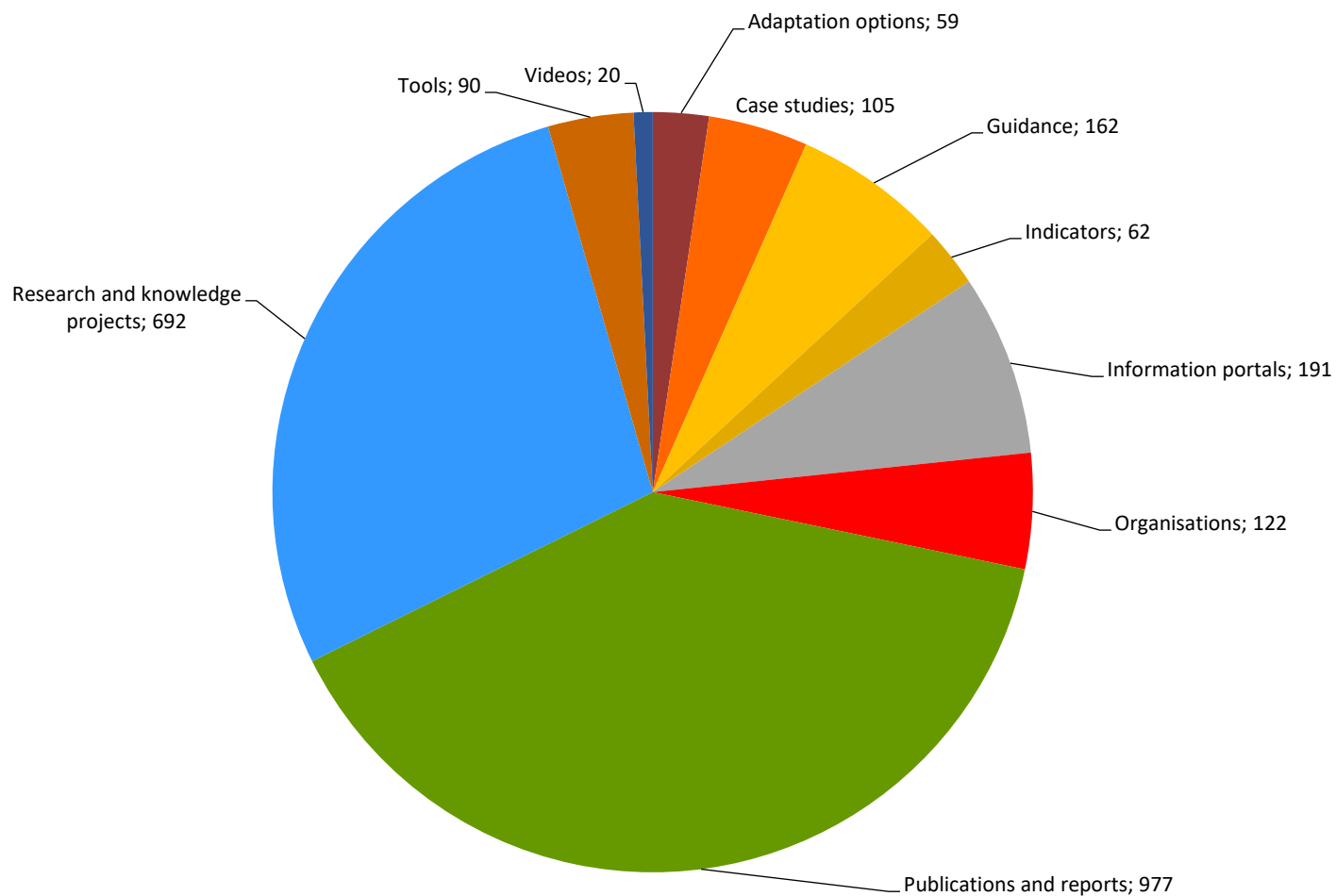


A total of 115 new Database items were published in the period 1 July – 31 December 2021.

Each database item can be relative to more than one Adaptation Sector (*left*: most relevant sector is shown)

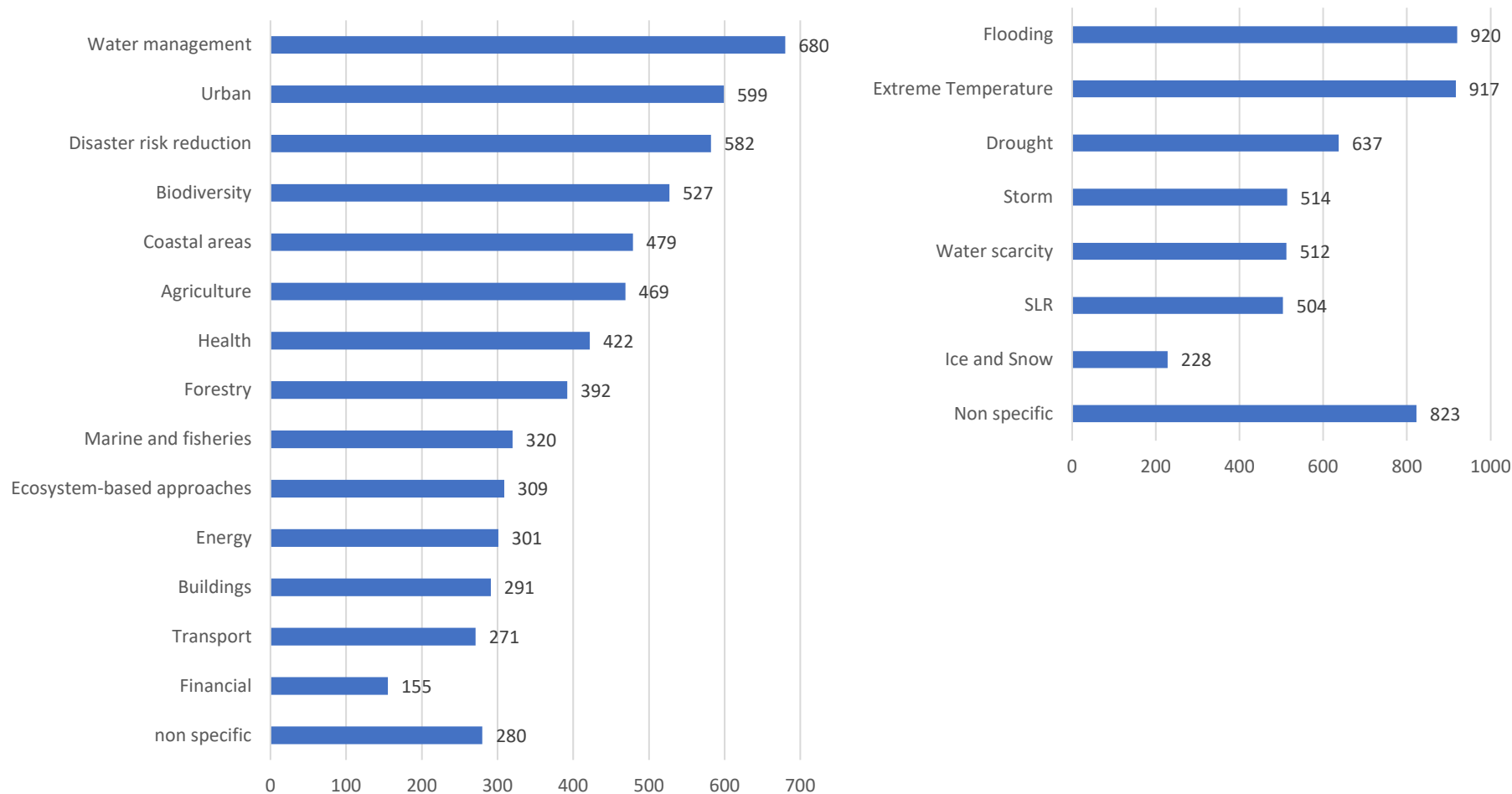
Each database item can be relative to only one Type of Data (*top right*: all sectors, *bottom right*: health sector only)

## Distribution of database content per Type of Data



A total of 2480 Database items were available in the Database as of 15 December 2021.

## Distribution of Database content per Adaptation Sector and per Climate Impact



A total of 2480 database items were available in the database as of 15 December 2021.  
 Each database item can be relative to more than one Adaptation Sector (*left*) and Climate Impact (*right*).