



**Climate
ADAPT**

SHARING ADAPTATION
INFORMATION
ACROSS EUROPE

Climate-ADAPT web statistics and database updating: performance reporting 01/2022

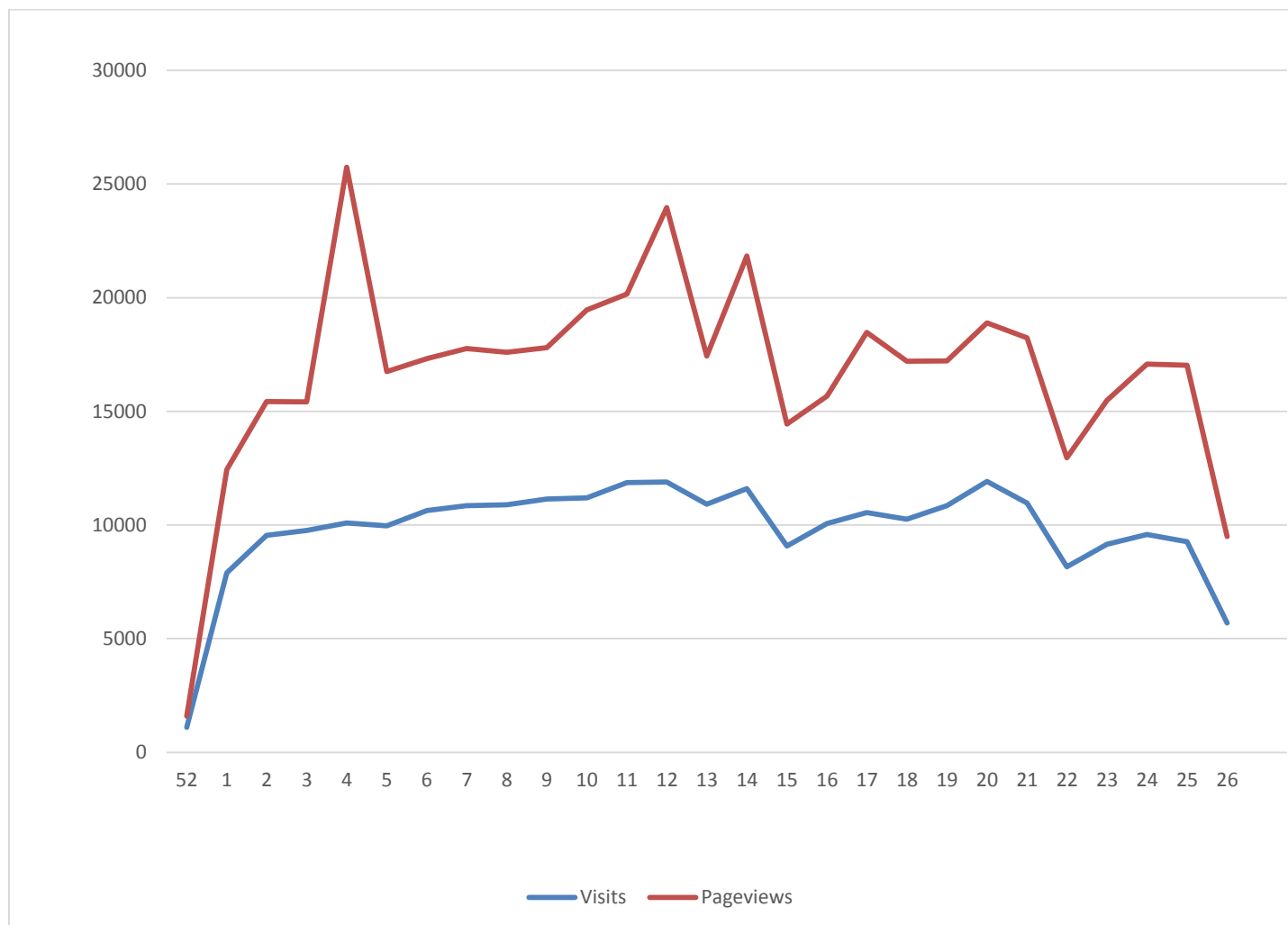
This factsheet summarizes information about the quality of the shared knowledge base on adaptation in Europe and the uptake of this knowledge by its users. It includes statistics on the platform performance with the purpose of providing information about the Climate-ADAPT database updating and platform outreach.

Hereafter the performance indicators for the first half of 2022 (between week 1 and week 27):

Visits and Page Views	2
Evolution of Page Views of the Climate-ADAPT core content (monthly basis)	3
Most visited Case Studies	4
New published Database items per EU Sector Policy and per Type of Data	5
Distribution of database content per Type of Data	Errore. Il segnalibro non è definito.
Distribution of Database content per Adaptation Sector and per Climate Impact	Errore. Il segnalibro non è definito.

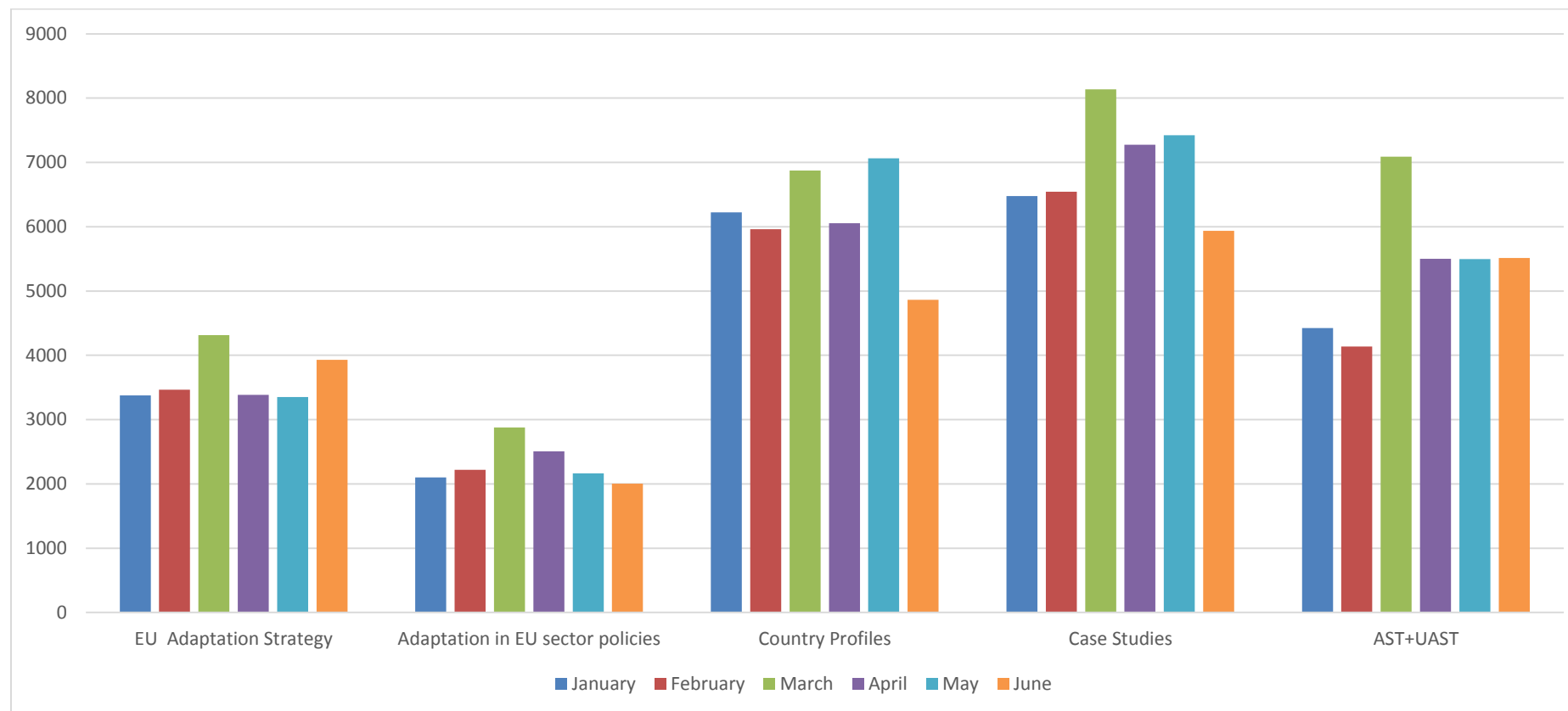
Visits and Page Views

Total Visits	264 875
Total Page Views	452 865



Evolution of the number of Visits and Page Views (weekly basis) in the period 1 January – 30 June 2022.

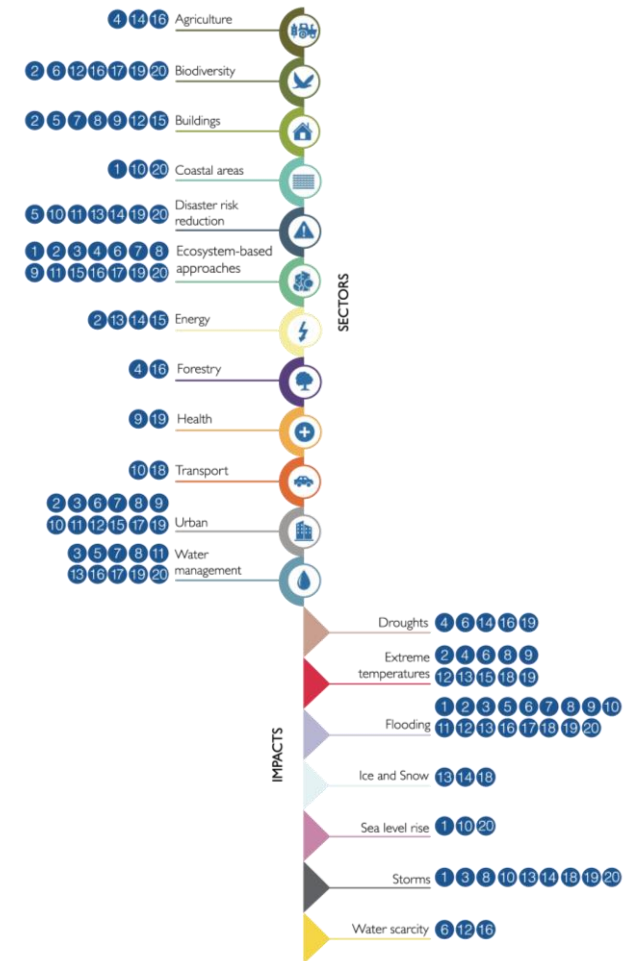
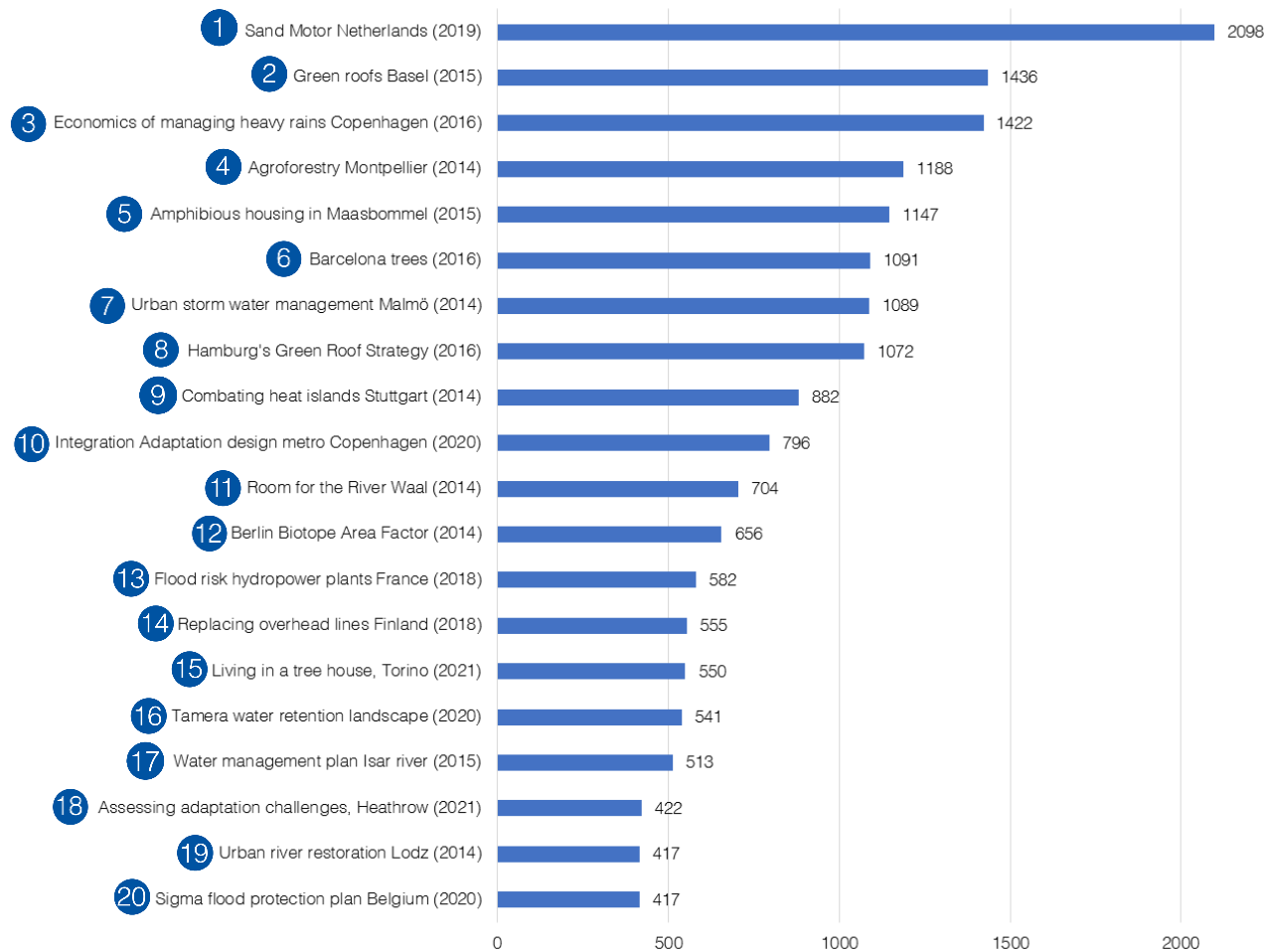
Evolution of Page Views of the Climate-ADAPT core content (monthly basis)



Total visits	21 823	13 871	37 044	41 790	32 158
---------------------	--------	--------	--------	--------	--------

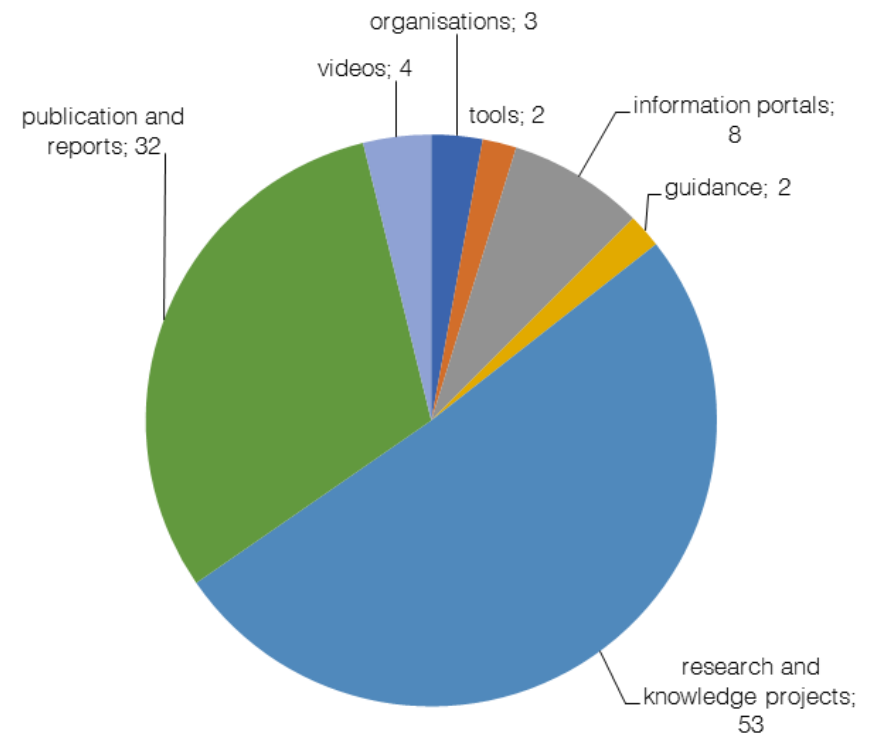
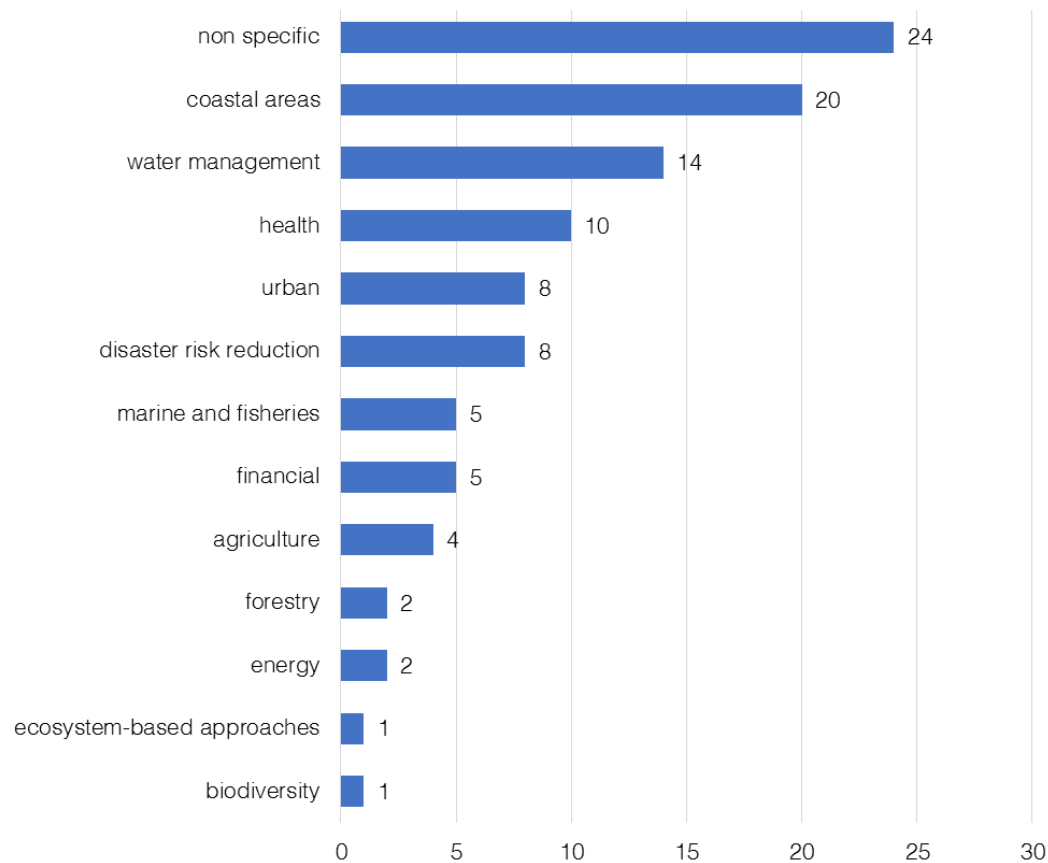
Evolution of Page views of Climate-ADAPT core content in the period 1 January – 30 June 2022.
 Core content are those features displayed in the dynamic area of the home page, i.e., the white box in the middle of the webpage.
 (AST = Adaptation Support Tool; UAST = Urban Adaptation Support Tool)

Most visited Case Studies



Left: Top 20 most requested Case Studies (1 January – 30 June 2022). Right: Sectors and Impacts are referred to each Case Study.

New published Database items per EU Sector Policy and per Type of Data



A total of 104 new Database items were published in the period 1 January – 30 June 2022.

Each database item can be relative to more than one Adaptation Sector (*left*: most relevant sector is shown)

Each database item can be relative to only one Type of Data (*right*)