



**Climate
ADAPT**

SHARING ADAPTATION
KNOWLEDGE FOR A
CLIMATE-RESILIENT EUROPE

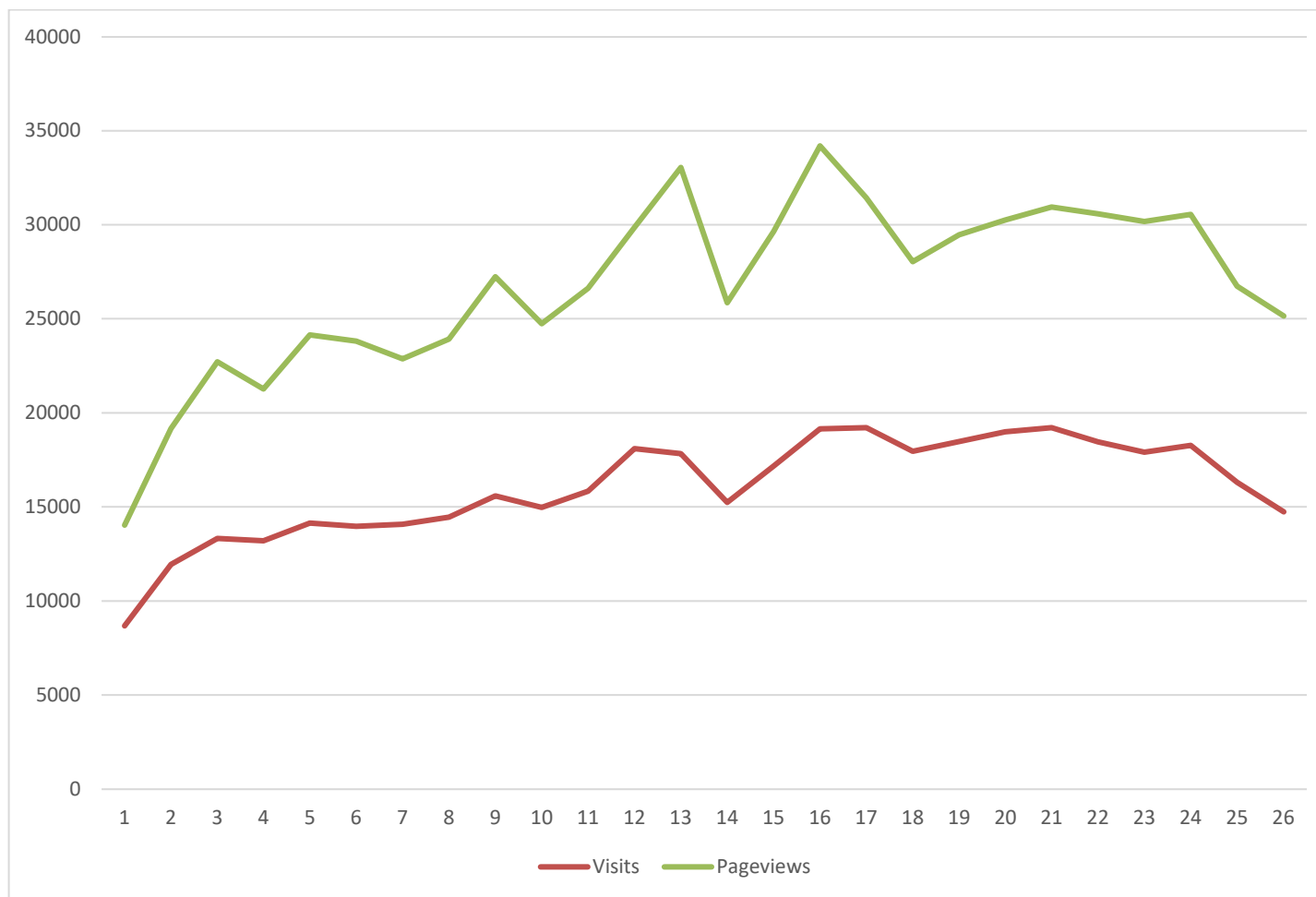
Climate-ADAPT web statistics and database updating: performance reporting 01/2023

This factsheet summarizes information about the quality of the shared knowledge base on adaptation in Europe and the uptake of this knowledge by its users. It includes statistics on the platform performance with the purpose of providing information about the Climate-ADAPT database updating and platform outreach.

Hereafter the performance indicators for the first half of 2023 (between week 1 and week 26):

Climate-ADAPT web statistics and database updating: performance reporting 01/2023	1
Total Visits and Total Page Views	2
Evolution of page views of the Climate-ADAPT core content (monthly basis)	3
Most visited Case studies	4
Most visited Adaptation options	5
New published Database items per EU Sector Policy and per Type of data	6

Total Visits and Total Page Views

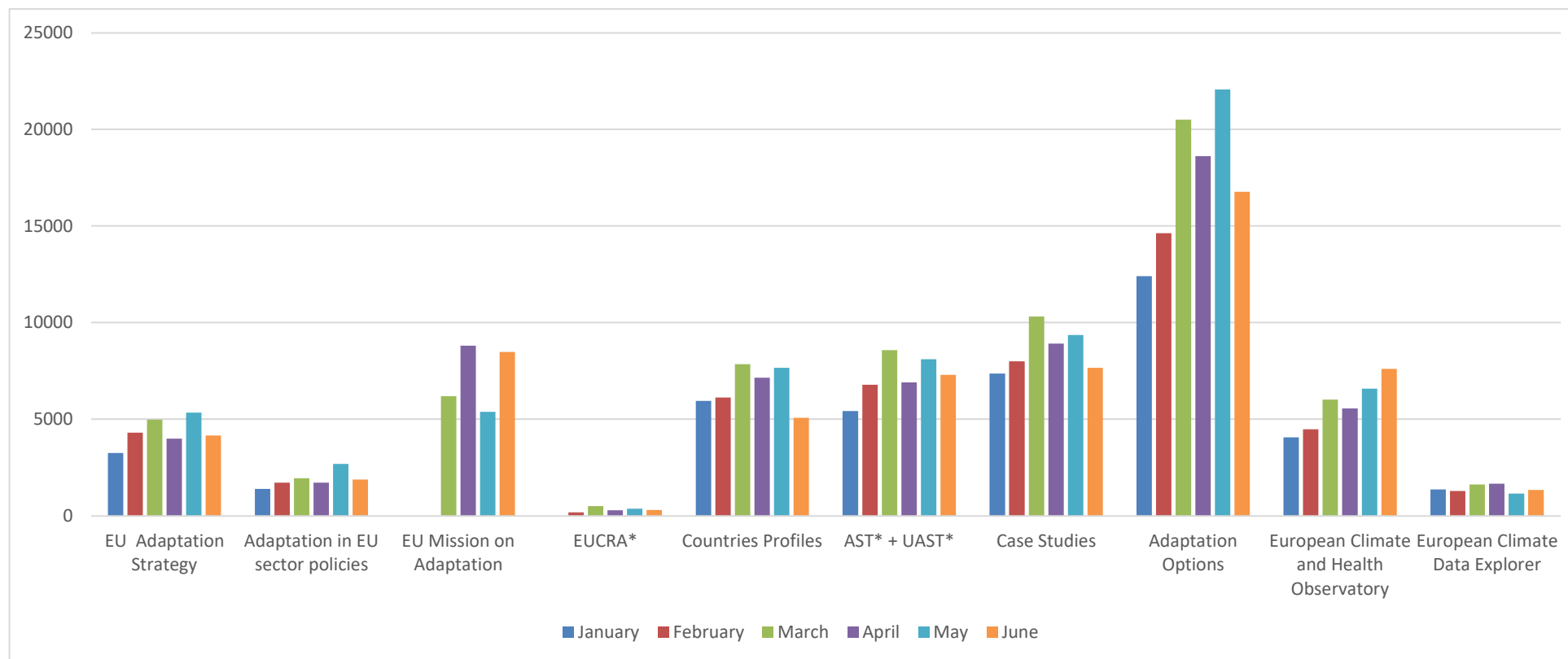


Evolution of the number of Total Visits and Total Page Views (weekly basis) in the period 1 January – 30 June 2023 (*left image*).

Overview of the evolution in 2019-2023/1 (*right table*)

first semester 2023	
Total Visits	417187
Total Page Views	696453
second semester 2022	
Total Visits	256 285
Total Page Views	444 086
first semester 2022	
Total Visits	264 875
Total Page Views	452 865
second semester 2021	
Total Visits	201 547
Total Page Views	342025
first semester 2021	
Total Visits	205 485
Total Page Views	372 343
second semester 2020	
Total Visits	140139
Total Page Views	253188
first semester 2020	
Total Visits	157638
Total Page Views	284470
second semester 2019	
Total Visits	128096
Total Page Views	231024
first semester 2019	
Total Visits	111462
Total Page Views	227301

Evolution of page views of the Climate-ADAPT core content (monthly basis)



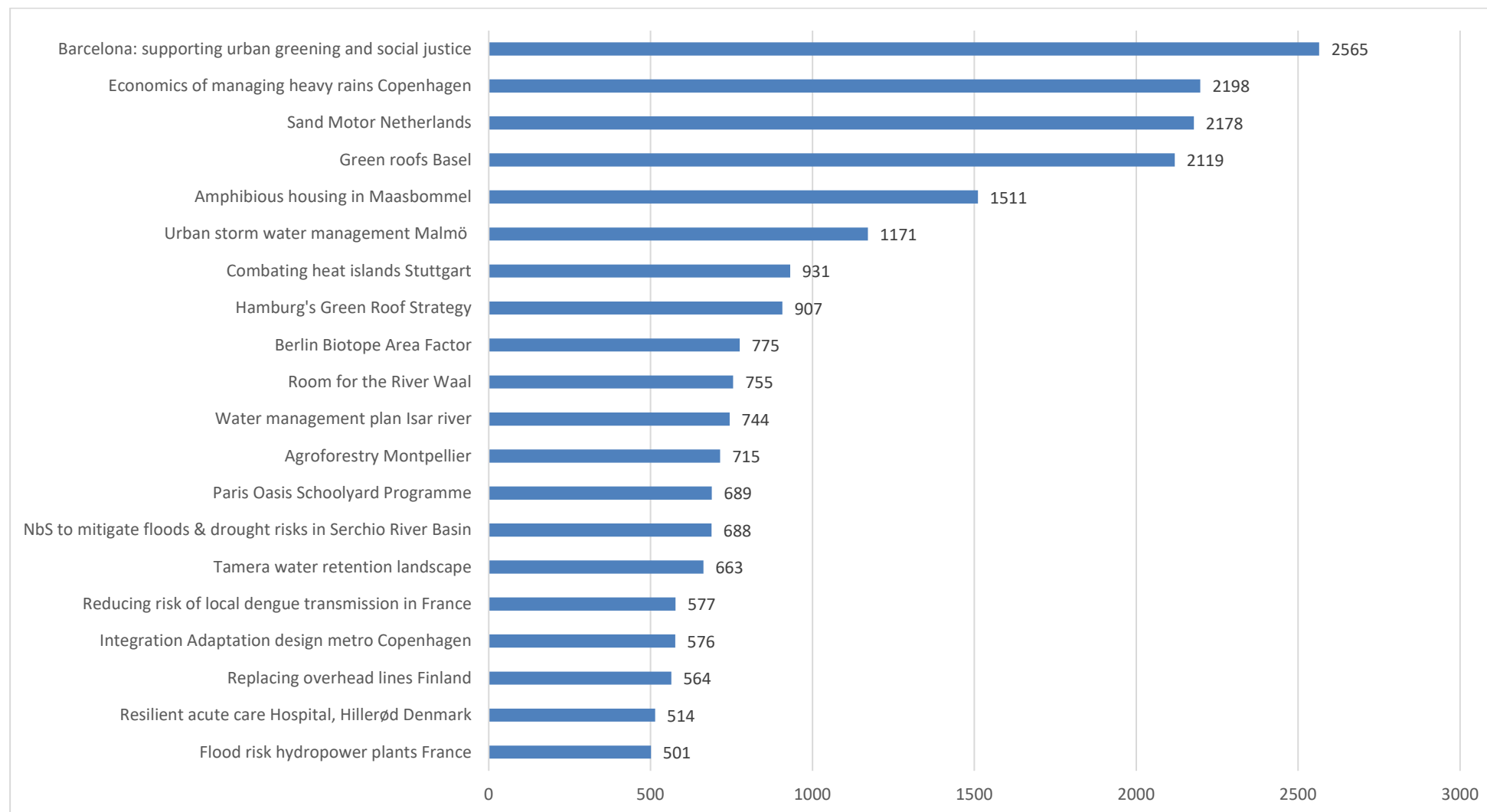
Page views (monthly basis)

26017 | 11351 | 28859 | 1661 | 39808 | 43111 | 51625 | 104999 | 34314 | 8433

Evolution of page views of Climate-ADAPT core content in the period 1 January – 30 June 2023.

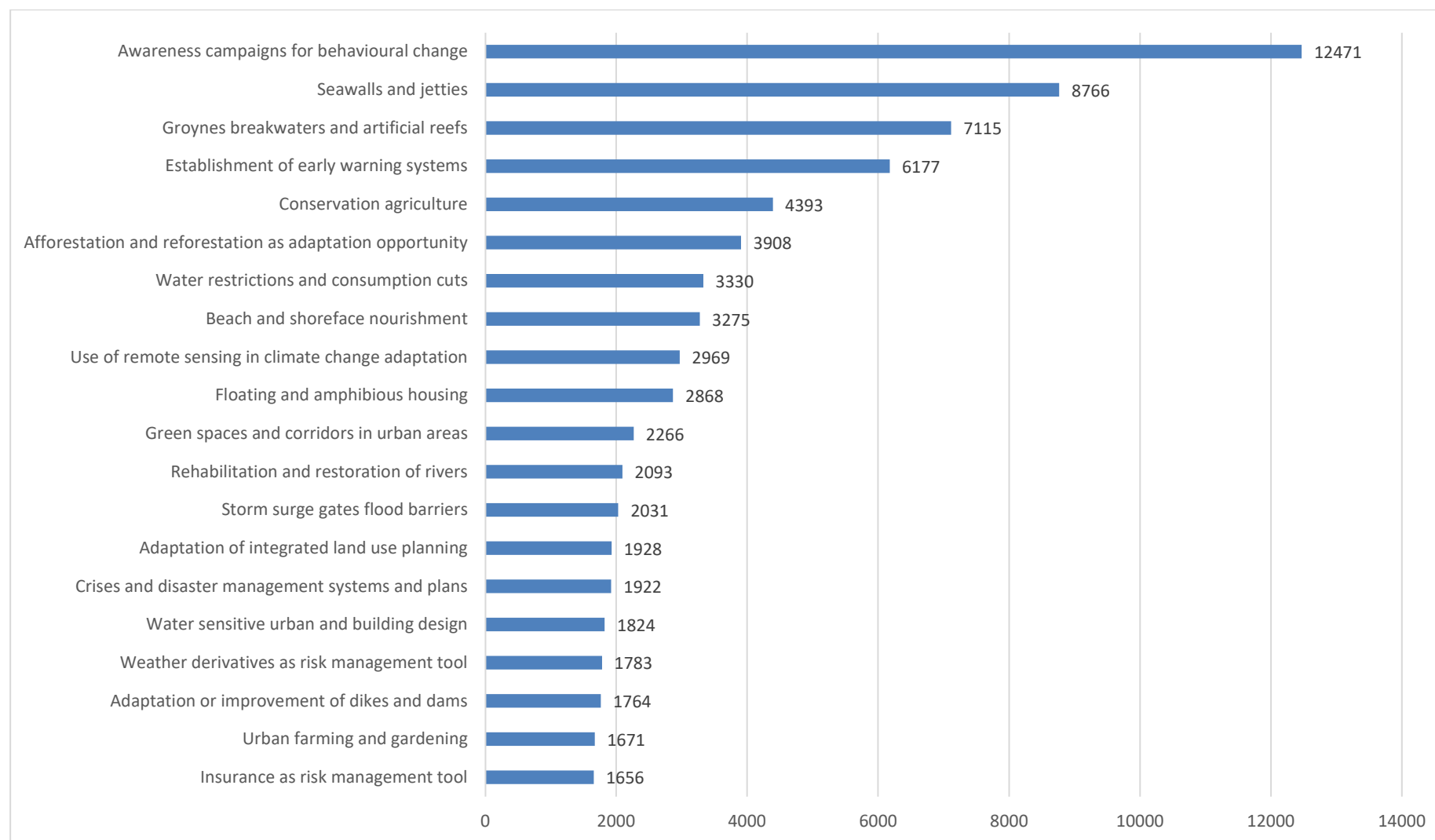
*AST = Adaptation Support Tool; EUCRA = European Climate Risk Assessment; UAST = Urban Adaptation Support Tool

Most visited Case studies



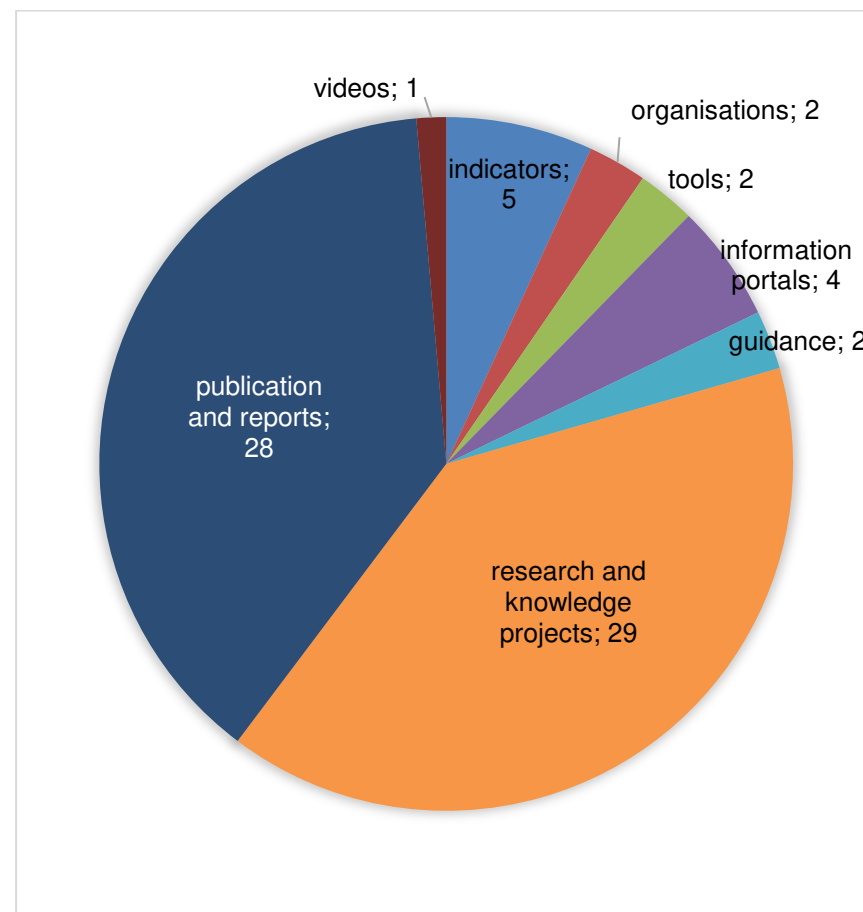
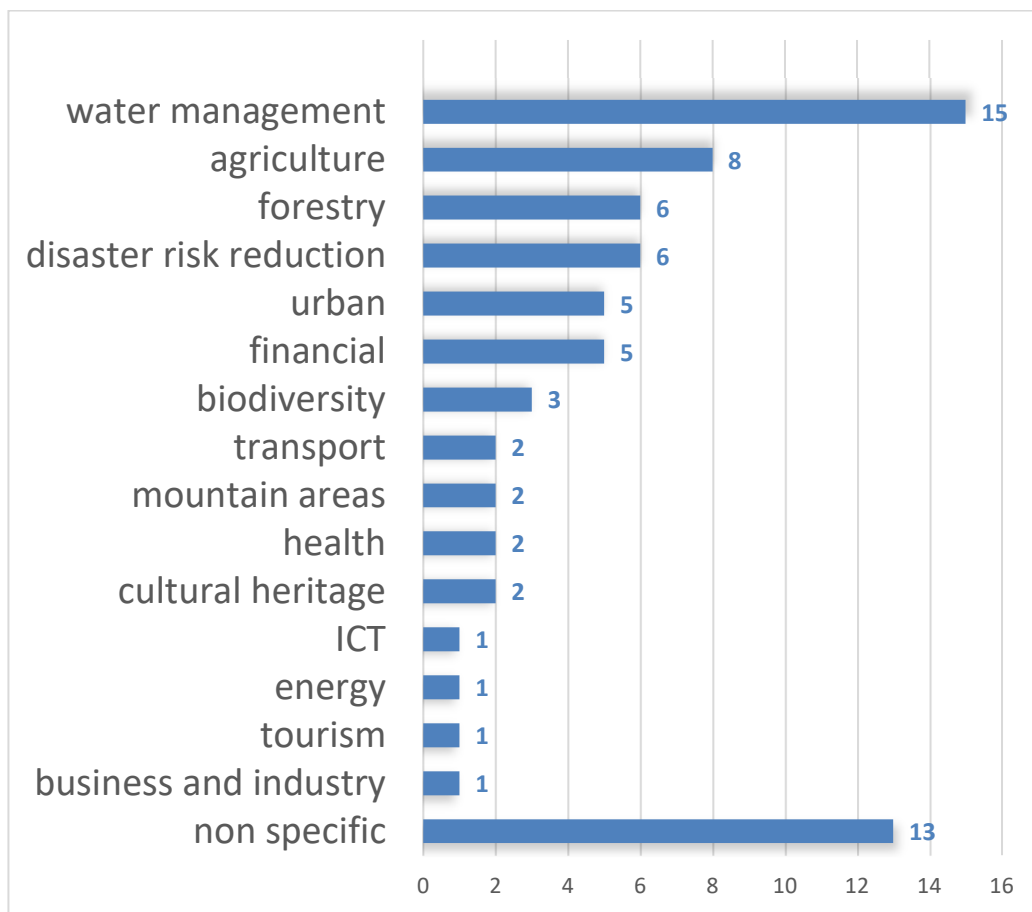
Number of page views for the top 20 most visited Case studies (1 January – 30 June 2023).

Most visited Adaptation options



Number of page views for the top 20 most visited Adaptation options (1 January – 30 June 2023).

New published Database items per EU Sector Policy and per Type of data



A total of 73 new database items were published in the period 1 January – 30 June 2023.

Each database item can be relative to more than one Adaptation Sector (*left image*: most relevant sector is shown).
 Each database item can be relative to only one Type of Data (*right image*).