

Leave No One Behind

Supporting vulnerable communities in climate action

Supporting vulnerable groups in climate adaptation is essential to creating inclusive and effective solutions. By recognising and addressing these communities' specific risks, we can develop strategies that truly respond to their unique challenges. These tools provide access to resources and support, integrating perspectives into climate policies for more equitable adaptation strategies.

Step 1

Preparing the ground for adaptation



Interactive Map

Representation mapping of vulnerabilities, risks, and impacts across regions or communities by integrating spatial data. This helps identify vulnerable populations, assess risk, and develop adaptation strategies. It can be presented through websites, community mapping exercises, participatory online maps, or apps focusing on vulnerable social groups.

Step 2

Assessing climate risks and vulnerabilities



Living Labs

Real-life environments where stakeholders collaborate to create, test, and evaluate innovative solutions, facilitating practical experimentation and collective learning to enhance resilience and address climate challenges.

Step 3

Identifying adaptation options



Co-creation Policies Guide

Step-by-step guides for co-creating policies involve collaborating with citizens, including vulnerable communities, to develop inclusive and socially just solutions. They use practical examples and tools to effectively engage all stakeholders and ensure their perspectives are integrated into policy development.

Step 4

Assessing and selecting adaptation options



Community-Based Participatory Research (CBPR)

Involving citizens, community members and researchers collaboratively throughout the research process by integrating local knowledge and needs to develop relevant, culturally appropriate, and sustainable solutions that address local climate challenges.

Step 5

Implementing adaptation policies and actions

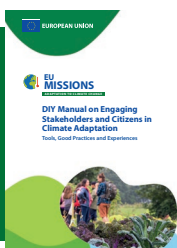


Local Climate Action Group

This activity brings together a group of people interested in climate action to collaborate on local projects. It aims to mobilise resources, build community, achieve tangible impacts, and enhance facilitation. The groups are suitable for small numbers across various locations and age groups.

Step 6

Monitoring, Evaluation and Learning (MEL)



Download the DIY Citizen and Stakeholder Manual for more information and examples of the tools and exercises in action.

Download